

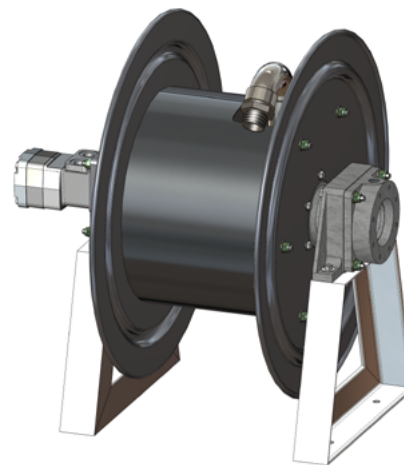
AHR250D - Aviation Drum Style Hose Reels

Liquip offer the AHR250D series of drum style hose reel suitable for use with aviation fuels.

The AHR250D series is designed for the effective storage and use of a quantity of fuel delivery hose to make refuelling activity easy. When the fill point is located at varying locations the required length of hose can be dispensed manually and rewound by either hydraulic or manual means.

Key Features

- Flow area is equal to 63mm throughout.
- All components are easily replaced as required.
- Sealing is by o-ring seals.
- Built tough to last in the harshest conditions.
- Hose nozzle storage can be fitted with interlocks to help prevent drive away accidents or product spills.
- A-frame mounting frame can be supplied upon request.
- 3" TTMA inlet flange has a ½" BSP tapped port for pressure testing in-situ.



AHR250D-38-H-30
Hydraulic Rewind model shown

Technical Information

Pressure tested & rating	Up to 2,100 kPa
Periodic Service	Annually - check O-rings and replace as required. Remove and repack bearing on each side of reel. 4 x M12 Bolts - see mounting footprint on following pages. 2 x A frames (AHR250-6) supplied separately.
Mounting	Inlet flange to suit 75mm (3") TTMA - 8 off 3/8" BSW x 25mm deep blind threads on a 124mm PCD.
Inlet and Outlet	Inlet flange to suit 75mm (3") TTMA - 8 off 3/8" BSW x 25mm deep blind threads on a 124mm PCD. 1 1½" or 2" gooseneck options
Rewind Options	Manual Hydraulic
Hose Drum widths	300mm (12") 450mm (18") 600mm (24") 950mm (37")
Materials	Aluminium cheek plates and drum. Nickel plated steel gooseneck. Viton seals. Klinger gaskets.
Variants	Can suit the following diameter hose: 25mm (1") 32mm (1¼") 38mm (1½") 50mm (2")
Operation	Dispense: Un-hook the nozzle and dispense hose to the required location. Rewind: Rotate manual handle or engage hydraulic motor.

Ordering Information

Example - AHR250D-50-M-60

Hosereel series	Gooseneck*	Rewind Mechanism	Hose Drum Width
AHR250D	38 - 1½" BSPP 50 - 2" BSPP 63 - 2½" BSPP	M - Manual Rewind Handle (AHR250D-9) H - Hydraulic Motor (1295)	30 - 300mm 45 - 450mm 60 - 600mm 95 - 950mm

*Gooseneck reducers required to suit various hose size.

Reducing Nipple 1½" BSP 1" BSP

Reducing Nipple 1½" BSP 1¼" BSP

Nipple 1½" BSP

Associated Equipment

Cartwheel/Catherine type hosereels: AHR250 series

Recommended hose: Elaflex or Continental Aviation hose in sizes as per technical information table below.

Overwing Nozzles: AVN series overwing nozzles or OPW 295 series overwing nozzles.

Underwing Nozzles: Contact Liquip for ordering information.

Hydraulic Motor: LIQ1295: HYD MOTOR DANFOSS (HOSEREEL).

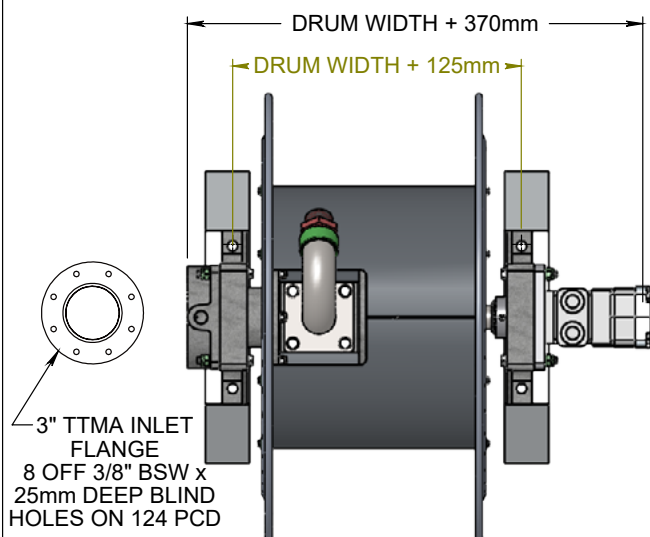


AHR Cartwheel/Catherine style
hosereel shown

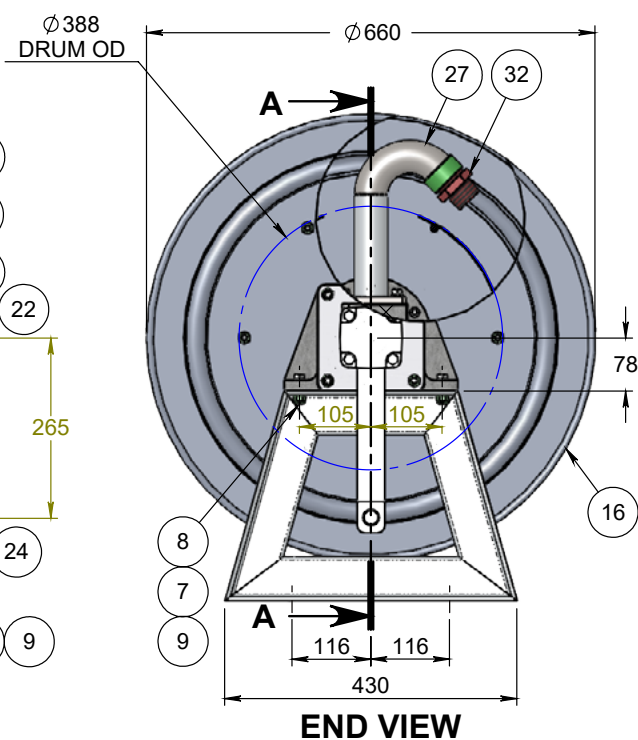
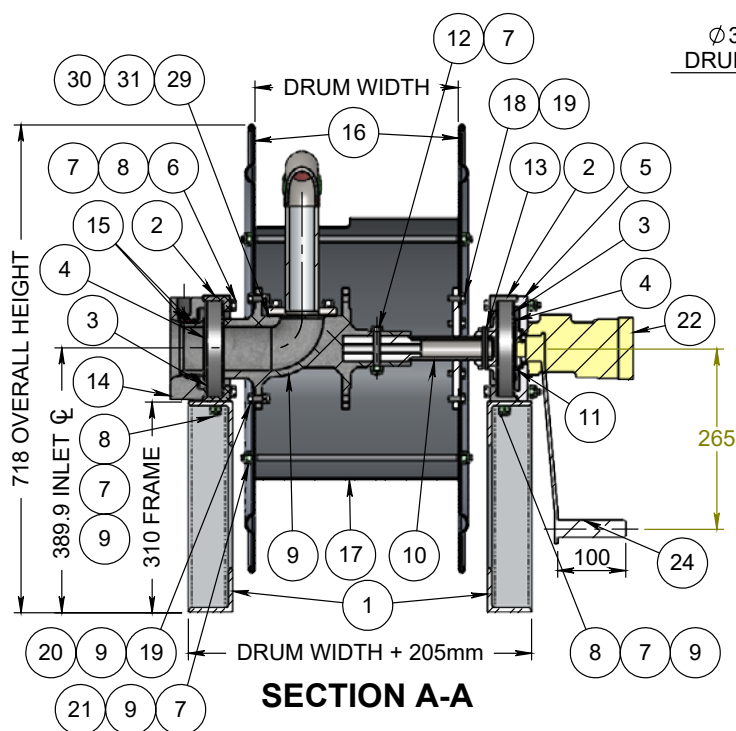
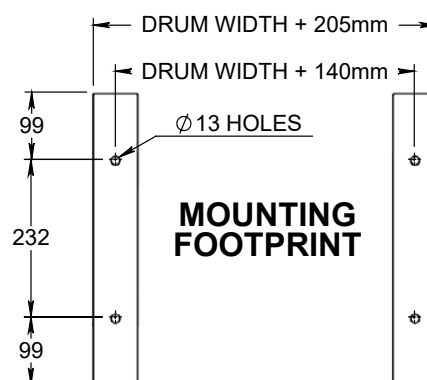


AVN042 series overwing nozzle
shown

AHR250D AVIATION DRUM STYLE HOSEREELS



TOP VIEW



2 OFF 'A' FRAMES (AHR250-6) ARE NOT SUPPLIED AS STANDARD.

AHR250D AVIATION DRUM STYLE HOSEREELS

AHR250D-50-M-60

38 - 1½" BSPP GOOSENECK
50 - 2" BSPP GOOSENECK
63 - 2½" BSPP GOOSENECK

M - MANUAL REWIND
H - HYDRAULIC REWIND

30 - 300mm HOSE DRUM WIDTH
45 - 450mm HOSE DRUM WIDTH
60 - 600mm HOSE DRUM WIDTH
95 - 950mm HOSE DRUM WIDTH

ITEM	PART No.	DESCRIPTION	AHR250D-xx-x-30	AHR250D-xx-x-45	AHR250D-xx-x-60	AHR250D-xx-x-95	MATERIAL
1	AHR250D-6	A-FRAME SUPPORT	2 OFF IF REQUIRED				Z/P STEEL
2	AHR250-2	HOUSING BEARING	2	2	2	2	ALUMINIUM
3	5715	BALL BEARING DEEP GROOVE	2	2	2	2	STEEL
4	4585	CIRCLIP EXTERNAL METRIC	2	2	2	2	STEEL
5	AHR250-13	MOUNTING PLATE	1	1	1	1	ALUMINIUM
6	0031	BOLT HEX HD IMP	8	8	8	8	Z/P STEEL
7	0150	NUT NYLOC	25	25	25	25	Z/P STEEL
8	0062	BOLT HEX HD IMP	4	4	4	4	Z/P STEEL
9	AHR250-1	MANIFOLD	1	1	1	1	ALUMINIUM
10	AHR250-19	ADAPTOR BEARING	1	1	1	1	ALUMINIUM
11	0066	BOLT HEX	1	1	1	1	Z/P STEEL
12	6676	SPRING (ROLL) PIN	1	1	1	1	Z/P STEEL
13	AHR250-3	SEAL HOUSING	1	1	1	1	ALUMINIUM
14	0127	O-RING	2	2	2	2	VITON A
15	AHR250D-2	CHEEKPLATE FOR DRUM STYLE	2	2	2	2	ALUMINIUM
16	0011	SETSCREW HEX	6	6	6	6	Z/P STEEL
17	0012	SETSCREW HEX	6	6	6	6	Z/P STEEL
18	0149	NUT NYLOC	6	6	6	6	Z/P STEEL
19	4281	GASKET - GOOSENECK	1	1	1	1	KLINGERITE
20	0022	SETSCREW HEX HD	4	4	4	4	Z/P STEEL
21	0109	WASHER SPRING	4	4	4	4	Z/P STEEL
22	AHR250D-9	HANDLE REWIND	AS REQUIRED				Z/P STEEL
23	1295	HYDRAULIC MOTOR					STEEL
24	AHR250D-5-30	SHAFT EXTENSION 300mm WIDE	1	-	-	-	Z/P STEEL
	AHR250D-5-45	SHAFT EXTENSION 450mm WIDE	-	1	-	-	Z/P STEEL
	AHR250D-5-60	SHAFT EXTENSION 600mm WIDE	-	-	1	-	Z/P STEEL
	AHR250D-5-95	SHAFT EXTENSION 950mm WIDE	-	-	-	1	Z/P STEEL
25	AHR250D-4-30	TIE ROD 300mm WIDE	6	-	-	-	STAINLESS STEEL
	AHR250D-4-45	TIE ROD 450mm WIDE	-	6	-	-	STAINLESS STEEL
	AHR250D-4-60	TIE ROD 600mm WIDE	-	-	6	-	STAINLESS STEEL
	AHR250D-4-95	TIE ROD 950mm WIDE	-	-	-	6	STAINLESS STEEL
26	AHR250D-3-30	DRUM 300mm WIDE	1	-	-	-	ALUMINIUM
	AHR250D-3-45	DRUM 450mm WIDE	-	1	-	-	ALUMINIUM
	AHR250D-3-60	DRUM 600mm WIDE	-	-	1	-	ALUMINIUM
	AHR250D-3-95	DRUM 950mm WIDE	-	-	-	1	ALUMINIUM
27	AHR250D-6-38	GOOSENECK - 1½" BSP	AS REQUIRED				N/P STEEL
	AHR250D-6-50	GOOSENECK - 2" BSP					N/P STEEL
	AHR250D-6-63	GOOSENECK - 2½" BSP					N/P STEEL
28	0445	REDUCING NIPPLE 1½" TO 1" BSP	AS REQUIRED				ST STEEL
	0439	REDUCING NIPPLE 1½" TO 1¼" BSP					ST STEEL
	AHR250D-17	HEX NIPPLE 1½" BSP					ST STEEL

AHR250D AVIATION DRUM STYLE HOSEREELS

	VARIANTS	ITEM NO	PARTS REQUIRED	PART DESCRIPTION
HOSE SIZE	1" (25mm)	29	AHR250D-6-38	GOOSENECK 38mm
		30	AAP SSN4025	REDUCING NIPPLE 1½" BSP TO 1" BSP
	1¼" (32mm)	29	AHR250D-6-38	GOOSENECK 38mm
		30	AAP SSN4032	REDUCING NIPPLE 1½" BSP TO 1¼" BSP
	1½" (38mm)	29	AHR250D-6-38	GOOSENECK 38mm
		30	AAP SSN40	NIPPLE 1½" BSP
	2" (50mm)	29	AHR250D-6-50	GOOSENECK 50mm
	2½" (63mm)	29	AHR250D-6-63	GOOSENECK 68mm
REWIND TYPE	MANUAL	24	AHR250D-9	MANUAL REWIND HANDLE
	HYDRAULIC	25	1295	HYDRAULIC MOTOR
DRUM WIDTH	300mm	28	AHR250D-3-30	DRUM 300mm WIDE
		27	6 x AHR250D-4-30	TIE ROD 340mm
		26	AHR250D-5-30	EXTENSION SHAFT 262mm
	450mm	28	AHR250D-3-45	DRUM 450mm WIDE
		27	6 x AHR250D-4-45	TIE ROD 490mm
		26	AHR250D-5-45	EXTENSION SHAFT 412mm
	600mm	28	AHR250D-3-60	DRUM 600mm WIDE
		27	6 x AHR250D-4-60	TIE ROD 640mm
		26	AHR250D-5-60	EXTENSION SHAFT 562mm
	950mm	28	AHR250D-3-95	DRUM 950mm WIDE
		27	6 x AHR250D-4-95	TIE ROD 990mm
		26	AHR250D-5-95	EXTENSION SHAFT 912mm

Maximum possible hose length in metres

Hose Size NB (OD)	300mm wide (with beads)	450mm wide (with beads)	600mm wide (with beads)	950mm wide (with beads)
1" (37mm)	38 (16)	58 (26)	77 (32)	120 (52)
1¼" (44mm)	18 (6)	31 (9)	40 (13)	64 (20)
1½" (51mm)	16 (5)	25 (7)	35 (11)	57 (18)
2" (66mm)	6 (4)	9 (6)	13 (9)	21 (14)
2½" (79mm)	5 (3)	7.5 (5)	10.5 (8)	18 (13)